

WideTEK® 36C

*New Model: **WideTEK 36C-600***

*Ultra fast and compact CIS
scanner,*

Widest color gamut in the industry.

***Fastest, widest and highest quality
color CIS scanner on the market
Made in Germany at affordable prices***



© 11_2014 / EN



- SCANS 36 INCH WIDTHS, NEARLY UNLIMITED LENGTH
- FAST SCANS: 10 INCHES PER SECOND AT 300 DPI IN FULL COLOR
- 1200 x 1200 DPI SCANNER RESOLUTION
- INTEGRATED 64BIT LINUX, INTEL I3, 8 GB RAM
- GIGABIT TCP/IP NETWORK INTERFACE
- SUPPORTS SRGB, ADOBE RGB, NATIVE COLOR SPACES
- LARGE WVGA COLOR TOUCHSCREEN FOR SIMPLIFIED OPERATION
- INTEGRATED WALK UP SCANNING SOFTWARE
- FACE UP SCANNING
- AUTOMATIC CROP AND DESKEW
- REAL TIME DISPLAY OF SCANNED IMAGES
- VIRTUAL RESCAN, MODIFY IMAGES WITHOUT RESCANNING
- LED LAMPS, NO WARM UP, IR/UV FREE
- DUST-FREE CAMERA TECHNOLOGY
- DURABLE, ANTISTATIC, ALL METAL PAPER PATH
- BUILT TO LAST
- EASY INSTALLATION VIA SCAN2NET® TECHNOLOGY



The new WideTEK® 36C-600, a true standalone system, raises the bar for speed again. With a speed of 10"/s at 300 dpi in color, it is three times faster than the next competitor.

Professional quality, affordable investment

Fastest color CIS scanner at an affordable price. Delivers images in brilliant quality with excellent color accuracy

The WideTEK® 36C-600 is by far the fastest color CIS scanner on the market, running at 10 inches per second at 300 dpi in full color even at the full width of 36" and still at 2.5 inches per second at 600 dpi. Grayscale and binary speeds are doubled, but are limited to 10 inches per second to ensure safe paper handling. All of these speeds are guaranteed due to the Scan2Net® technology integrated in the scanner's own built in 64 bit Linux PC. It is a true standalone system, capable of scanning directly to FTP servers, hot folders, USB drives, to cloud applications in the internet or copying to printers directly, without the need for an extra PC.

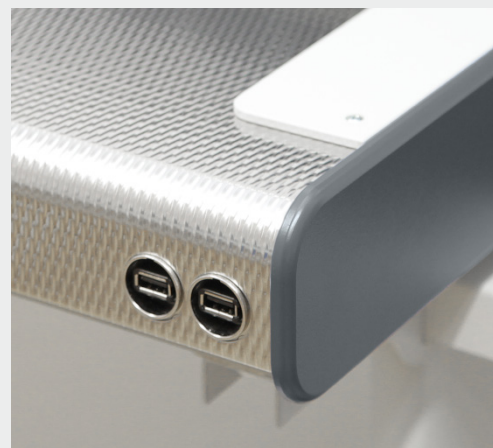
Illuminated by more than 1,000 LEDs, WideTEK® 36C produces extraordinarily sharp images, with color accuracy even superior to many CCD scanners. Document rotation can be done on the fly, therefore a scan of an E-sized document in portrait mode at 300 dpi in 24bit color takes less than 6 seconds to scan and another 2 seconds to crop & deskew, preview and store.

Further highlights that make the WideTEK® 36C scanner the right choice for every application:

- Scan2USB – Walk up scanning to a USB device
- Scan2Print – Copy to networked printers or hot folders
- Scan2Network – Output to network resources, SMB, FTP
- Output formats: PDF, PDF/A, JPEG, TIFF, PNM
- Scan2Pad® – Operation via tablets or other mobile devices
- Virus resistant Linux OS
- OS independent, runs with Windows 7, 8, Linux, Mac
- ScanWizard uses any browser: IE, Safari, Chrome, Firefox
- Remote maintenance and troubleshooting
- Firmware updates via web interface
- Wide color gamut, supports sRGB, Adobe RGB, native RGB

Options:

- Batch Scan Wizard for high volume scanning
- Floor stand, external 19" monitor for virtual rescans
- Full Coverage Warranty – Up to 5 years, free spare parts & more



Large documents like maps rewind over the top so there is no bending to pick them up. Two USB ports let you take away your scanned images on a USB device.

Markets and Applications

WideTEK® 36C-600, a valuable production device for numerous markets

WideTEK® 36C-600 Markets

- AEC, Architecture, Engineering, Construction, CAD
- Utility Companies, Developers, Government
- Copy Services, Reprographics
- GIS, Mapping Services
- Media Control, Press Clipping Services
- Universities, Libraries, Registries

The applications are many and diverse. WideTEK® 36C-600 for nearly any application where you need wide format and production speeds.

WideTEK® 36C-600 Applications

- Scanning of maps, color posters, display graphics,
- Reproducing artwork, photographs
- Scanning of engineering and architectural CAD drawings
- Production scanning of newspapers, periodicals and magazines
- Digitizing documents from government offices and registries
- Archiving and copying blueprints and sepias

The Scan2Net® platform is the technological foundation of all WideTEK® and Bookeye® scanners from Image Access. It replaces the proprietary scanner drivers and software that traditional scanners require with the fastest common, nonproprietary inter-device connection available: TCP/IP over Ethernet. With network interface speeds much higher than USB 2.0 or USB 3.0 scanners, Scan2Net® devices are able to reach unrivaled performance at extremely low connectivity cost.

Scan2Net® scanners feature a 64bit Linux based operating system, dedicated to scanner specific imaging and mechanical control tasks, maximizing scanning speeds and performance.

Scan2Net® Advantages

- 64bit Linux based computer, fast and virus protected
- Easy integration into existing network structures
- Only a single IP address is required to run the scanner
- Integration and remote access via the Intranet or even the Internet
- Scans directly to SMB, FTP, hot folders, USB, Email or the Cloud without external PCs
- Simple, intuitive operation, Java and HTML based
- Clear menu structure, operation via touchscreen, acoustical feedback
- Multilanguage support, customizable user interface

TECHNICAL DATA

Maximum Document Size	965 mm / 38 inch
Maximum Scan Width	915 mm / 36 inch
Scanner Resolution / Optical Resolution	1200 x 1200 dpi / 1200 x 600 dpi
Speed 24 bit Color, full 36" width	300 dpi - 15 m/min (10 inch/s)
	600 dpi - 3.8 m/min (2.5 inch/s)
	1200 dpi - 1.9 m/min (1.2 inch/s)
Speed 8 bit Grayscale, full 36" width	600 dpi - 7,6 m/min (5 inch/s)
	1200 dpi - 3.8 m/min (2.5 inch/s)
Color Depth	36 bit color, 12 bit grayscale
Scan Output	24 bit color, 8 bit grayscale, bitonal, enhanced halftone
File Formats	PDF, PDF/A, JPEG, PNM, TIFF decompressed, TIFF G4 (CCITT)
ICC Profiles	Embedded for sRGB, Adobe RGB and native. Individual profiling via web based Scan2ICC subscription
Camera	3x CIS modules, 22,389 pixels, encapsulated and dust-proof
Light source	Approx. 1000 LEDs on both sides, no shadows or wrinkles visible
Computer	64 bit Linux, Intel i3, dual core processor, 8 Gigabyte RAM for very long scans
Interface	1 GBit Fast Ethernet with TCP/IP based Scan2Net® Interface
Dimension	195 x 1100 x 410 mm (7.7 x 43.3 x 16.1 inch) (H x W x D)
Weight	30 kg / 66 lbs.
Electrical Connection	100 – 240 V AC, 47 – 63 Hz (external power supply, complies with ECO standard CEC level V)
Power Consumption	≤ 0.5 W (Sleep) / 4.8 W (Standby) / 55 W (Scanning)
Operating Temperature	5 to 40 °C, 40 to 105 °F
Relative Humidity	20 to 80 % (non-condensing)
Noise	< 35 dB(A) (Scanning) / < 25 dB(A) (Standby)
Approvals	ANSI/UL 60950-1, CAN/CSA C22.2 No. 60950-1; IEC 60950-1; FCC 47 Part 15, EN 55022, EN 55024



WEEE

RoHS



Visit our homepage!



IMAGE ACCESS GMBH

Hatzfelder Str. 161-163
42281 Wuppertal, Germany
Tel.: +49 (0)202 27058-0
www.imageaccess.de

IMAGE ACCESS LP

Crystal Lake, IL 60014, USA
Office: +1 (779) 220-4662
Sales: +1 (727) 612-0809
www.imageaccess.us

Technical changes, errors and omissions excepted.
All information subject to change. © Image Access GmbH 2014